

CERTIFICATE OF LOCATION OF GOVERNMENT CORNER

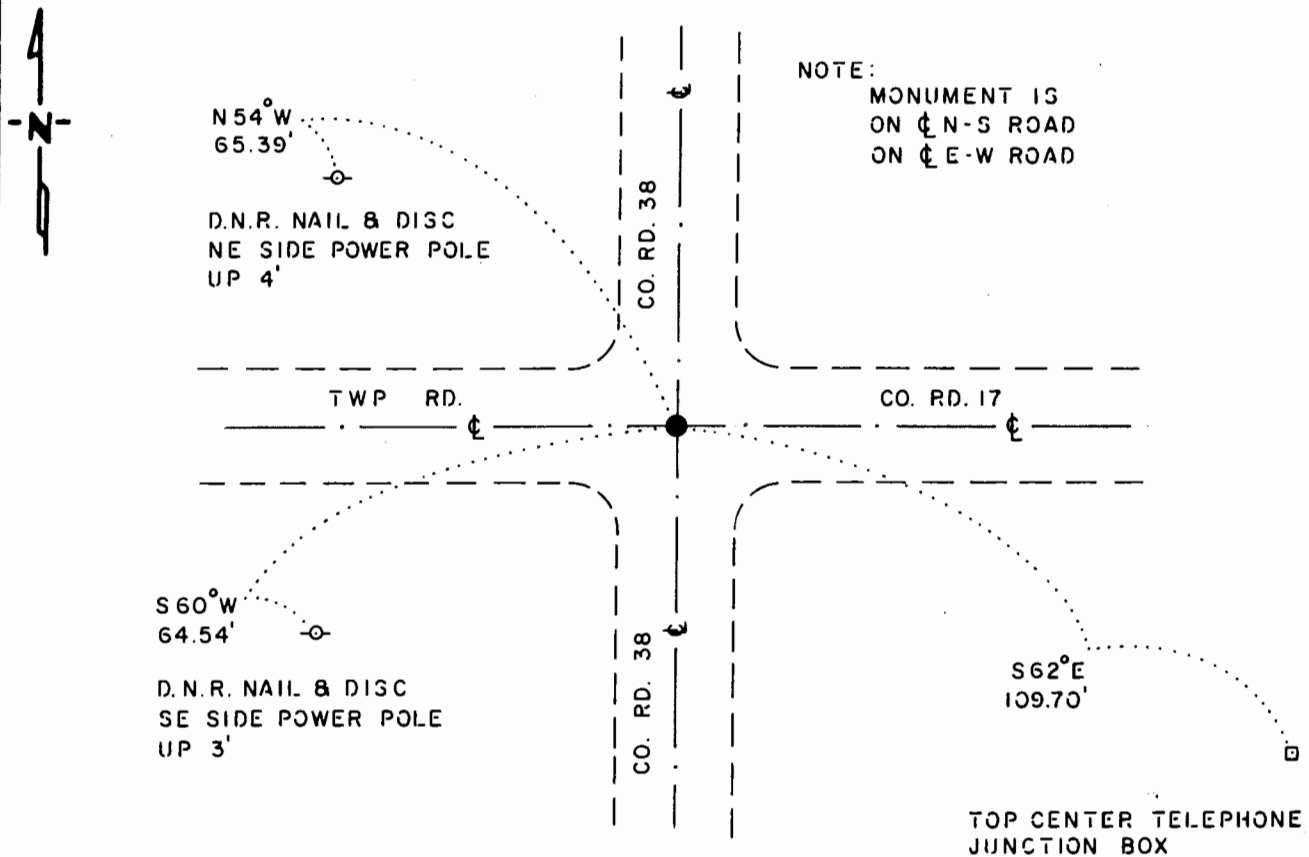
NORTHEAST Corner of Section 27, Township 108 N., Range 40 W., 5th P.M.

STATE OF MINNESOTA, County of MURRAY

At the corner location shown on the sketch:

- On 10-23-84 found a 6" x 6" CONCRETE MONUMENT, DOWN 14"
DATE
- left monument as found, lowered monument, removed monument (explain)
- On 10-23-84 placed a 1 1/4" x 1 1/4" x 13" PERFORATED STEEL TUBE WITH
DATE
ALUMINUM CAP STAMPED "D.N.R SURVEY MARKER", OVER MON. DOWN 0.1

SKETCH OF REFERENCE TIES



BEARINGS OBSERVED WITH COMPASS

Statement of evidence relative to this corner location is on back of page.

J. B. M. 7-18-85
G-361

I hereby certify that this document and the data contained herein was prepared by me or under my direct supervision.

Lawell R. Pomeroy 7-22-85
SIGNATURE DATE

Registration No. 170051
 Land Surveyor, Professional Engineer
 County Surveyor, County Engineer

OFFICE OF THE COUNTY RECORDER **172143**
County of Murray

I hereby certify that this document was filed in the Co. Recorders office at 10 .M. on the 30th day of July A.D., 19 85

County Recorder Maury J. Ohme

By _____, Deputy

DOCUMENT NO. 172143

Northeast Corner Section 27, Township 108 North, Range 40 West

This corner was originally established by the U. S. General Land Office survey in 1861. The government notes show corner marked with a wood post set in mound of earth with pits and trench dug around the mound.

In October 1984, the DNR Bureau of Engineering contacted the Murray County Offices of the Recorder and Highway Engineer for corner information.

The following information was obtained from the County Recorder's Office: Surveyor's Record Book A, on Page 284, contains a survey made by J. W. Woolstencroft, County Surveyor on June 7, 1922. The following is stated about the corner: "33 feet east and 16 1/2 feet north of fence on Section 27 which was located by me when original corners were there".

The following information was obtained from the County Highway Engineer's Office:

A page in a Surveyor's Record Book, shows Section 23 and describes this corner as a stone with these ties:
RP tack in blazed fence corner, southwest, 45.5 feet
RP tack in blazed fence corner, northwest, 46.5 feet

In October 1984, the DNR Bureau of Engineering traversed to the area of the corner and found a 'T' bar fence post 13 inches long over a 6 inch by 6 inch concrete monument which was down 14 inches. Concrete monument is at the intersection of roads north-south and east-west. Searched for, but did not find any previous ties.

Accept the concrete monument as the location of the corner.

Traverse information is available from the DNR Bureau of Engineering.

rec21/missu2